

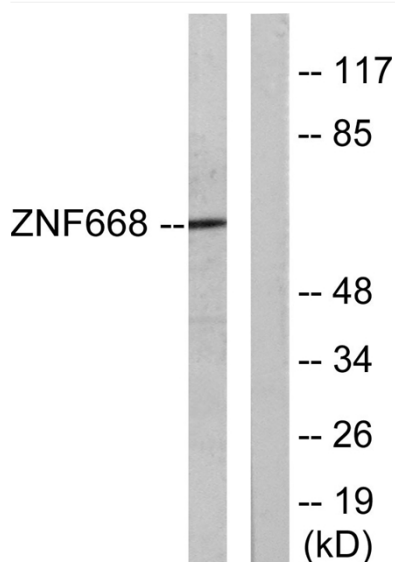


# ZNF668 Polyclonal Antibody

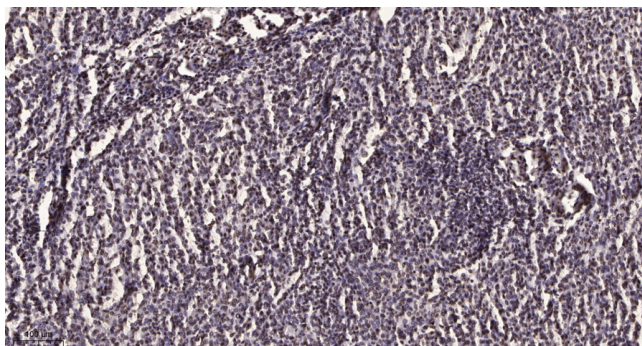
<b>Catalog No</b>	YP-Ab-02198
<b>Isotype</b>	IgG
<b>Reactivity</b>	Human;Mouse
<b>Applications</b>	WB;IHC;IF;ELISA
<b>Gene Name</b>	ZNF668
<b>Protein Name</b>	Zinc finger protein 668
<b>Immunogen</b>	The antiserum was produced against synthesized peptide derived from human ZNF668. AA range:271-320
<b>Specificity</b>	ZNF668 Polyclonal Antibody detects endogenous levels of ZNF668 protein.
<b>Formulation</b>	Liquid in PBS containing 50% glycerol, 0.5% BSA and 0.02% sodium azide.
<b>Source</b>	Polyclonal, Rabbit,IgG
<b>Purification</b>	The antibody was affinity-purified from rabbit antiserum by affinity-chromatography using epitope-specific immunogen.
<b>Dilution</b>	Western Blot: 1/500 - 1/2000. Immunohistochemistry: 1/100 - 1/300. Immunofluorescence: 1/200 - 1/1000. ELISA: 1/10000. Not yet tested in other applications.
<b>Concentration</b>	1 mg/ml
<b>Purity</b>	≥90%
<b>Storage Stability</b>	-20°C/1 year
<b>Synonyms</b>	ZNF668; Zinc finger protein 668
<b>Observed Band</b>	68kD
<b>Cell Pathway</b>	Nucleus .
<b>Tissue Specificity</b>	Brain,Mammary gland,Placenta,Skin,
<b>Function</b>	function:May be involved in transcriptional regulation.,similarity:Belongs to the krueppel C2H2-type zinc-finger protein family.,similarity:Contains 16 C2H2-type zinc fingers.,
<b>Background</b>	function:May be involved in transcriptional regulation.,similarity:Belongs to the krueppel C2H2-type zinc-finger protein family.,similarity:Contains 16 C2H2-type zinc fingers.,
<b>matters needing attention</b>	Avoid repeated freezing and thawing!
<b>Usage suggestions</b>	This product can be used in immunological reaction related experiments. For more information, please consult technical personnel.



## Products Images



Western blot analysis of lysates from Jurkat cells, using ZNF668 Antibody. The lane on the right is blocked with the synthesized peptide.



Immunohistochemical analysis of paraffin-embedded human brain tumor. 1, Antibody was diluted at 1:200(4° overnight). 2, Tris-EDTA, pH9.0 was used for antigen retrieval. 3, Secondary antibody was diluted at 1:200(room temperature, 45min).